



Retail For Lease

Prime Opportunity for
Retail in the ByWard Market
90 George Street, Ottawa





Overview

- Located at the heart of the ByWard Market, the number one touristic attraction in Ottawa
- Steps from the LRT's Rideau station and close to Ottawa's arterial routes
- Excellent retail co-tenancy
- Close proximity to Rideau Centre
- Excellent signage opportunity

ByWard Market

The ByWard Market is Ottawa's number one tourist attraction, and is the premier destination for shopping, dining, arts, entertainment and professional services for residents and visitors. This area averages 50,000 visitors per weekend in the summer months. It is home to both a local farmers' market and artisans with many stands, as well as over 600 businesses*

*Source: <http://byward-market.com/en/home/>

Property Details

UNIT 100 + PATIO | 6,299 SF (Facing George Street)

TERM | 10 Years

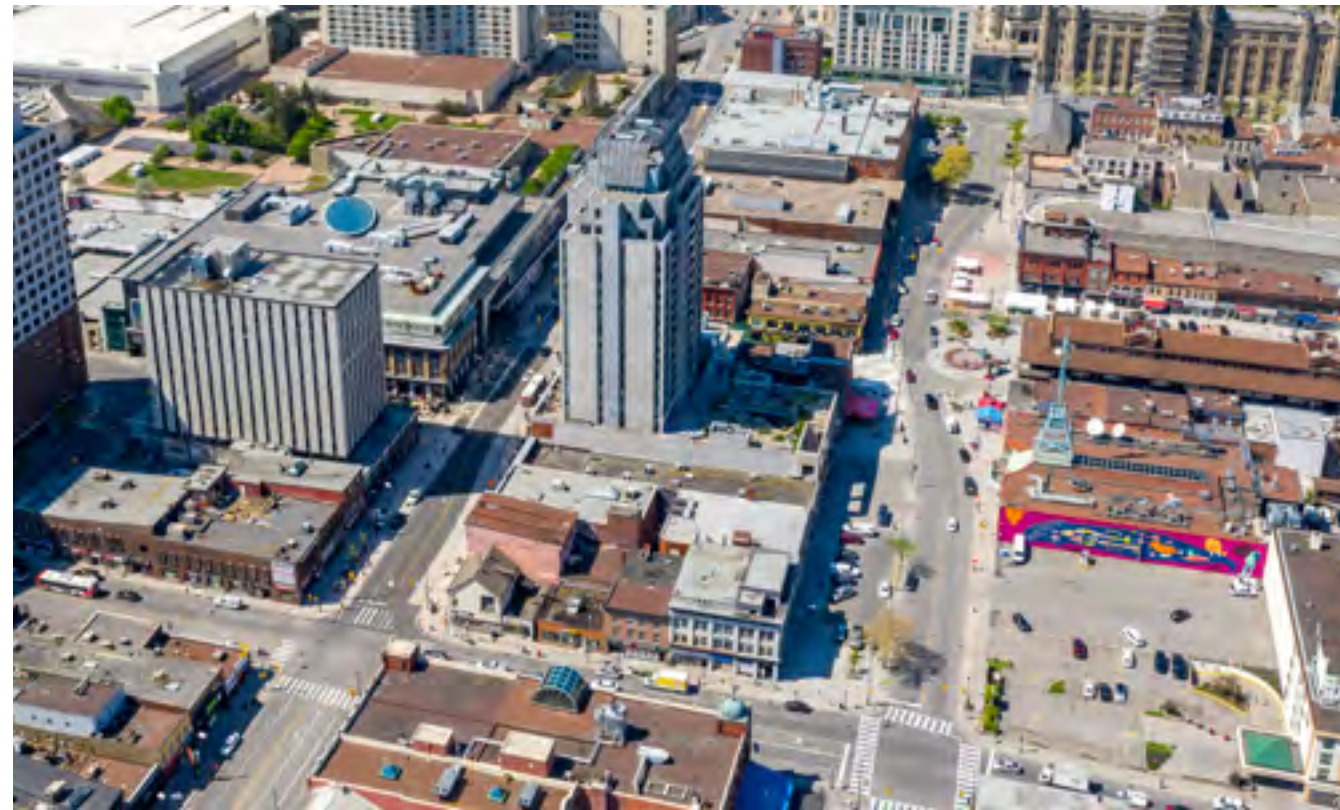
AVAILABLE | Immediately

NET RENT | Contact Listing Brokers

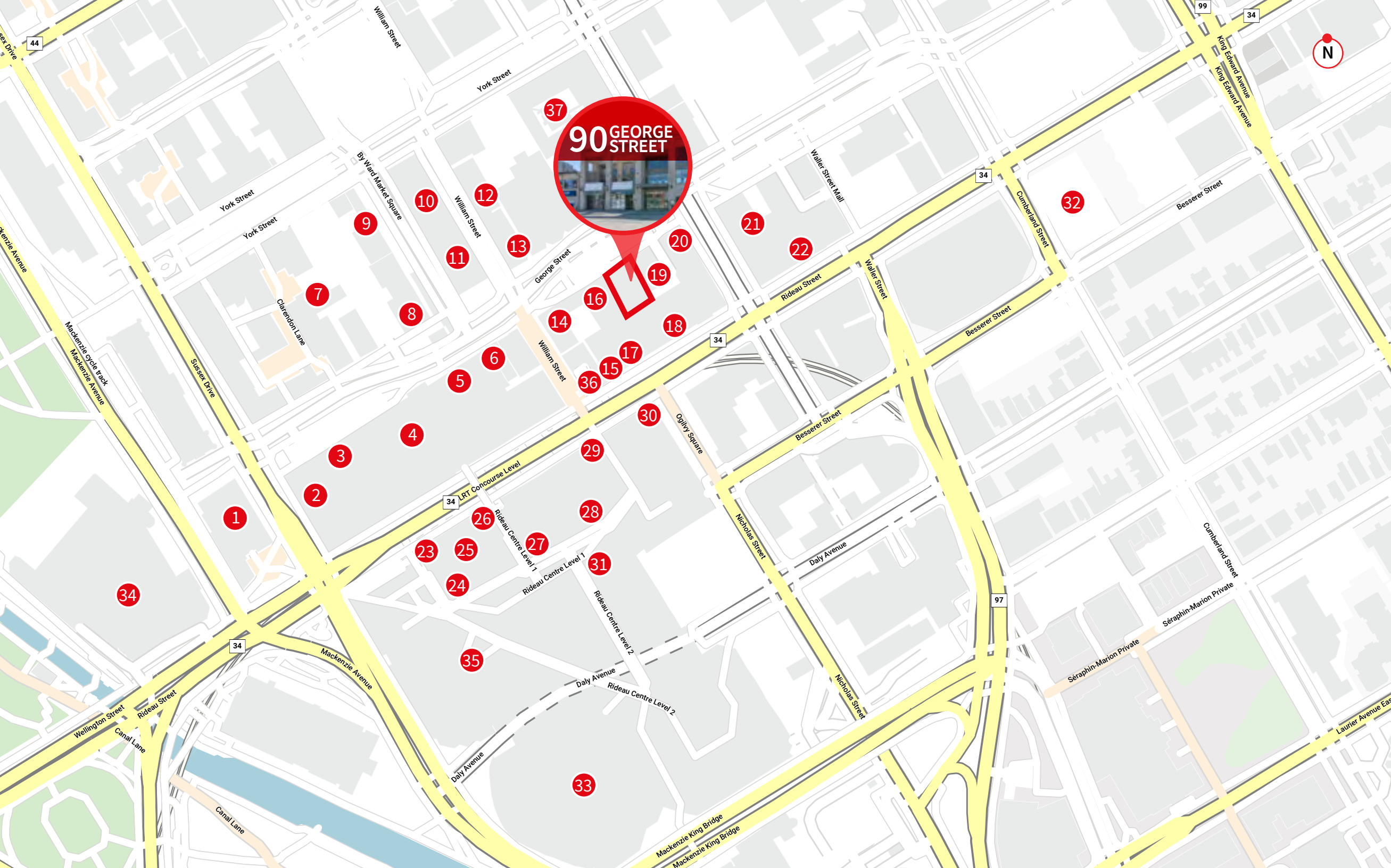
ADDITIONAL RENT | \$19.21 PSF (est. 2021)

Highlights

- Valet parking and parking spaces available underground
- Booming local residential condominium market
- Surrounded by the most active restaurant and bar scene in Ottawa
- Retail around/ well known banners including: Anytime Fitness, Beaver's Tails, Chatime, RBC bank, Scotiabank, Urban Outfitters, etc..
- The connected office building draws urban professionals that want to be in the centre of it all
- Daily traffic counts
 - George St & Dalhousie St
 - Vehicles: 14,895 vehicles/day (2019)
 - Pedestrians: 34,209 pedestrians/day (2016)







Neighbourhood

- 1

Milestone
- 2

Chapters
- 3

Starbucks
- 4

Hudson's Bay
- 5

Topshop Rideau
- 6

McDonald's
- 7

Planet Coffee
- 8

EQ3
- 9

ByWard Centre
- 10

ByWard Market
- 11

ByWard Cafe
- 12

CACAO 70 Eatery
- 13

Beaver Tails
- 14

The Grand Pizzeria & Bar
- 15

Scotiabank
- 16

Menchie's
- 17

Urban Outfitters
- 18

RBC Royal Bank
- 19

Anytime Fitness
- 20

Giant Tiger
- 21

Chatime
- 22

Cora Breakfast& Lunch
- 23

The LEGO Store
- 24

Call It Spring
- 25

Tim Hortons
- 26

Rideau Station
- 27

BonLook
- 28

Vans
- 29

H&M
- 30

Joey Rideau
- 31

CF Rideau Centre
- 32

Tim Hortons
- 33

Nordstorm
- 34

Fairmont Chateau Laurier
- 35

The Westin Ottawa
- 36

Rideau Station
- 37

Marriot Residence Inn
- 38

Shaw Convention Centre

Demographics

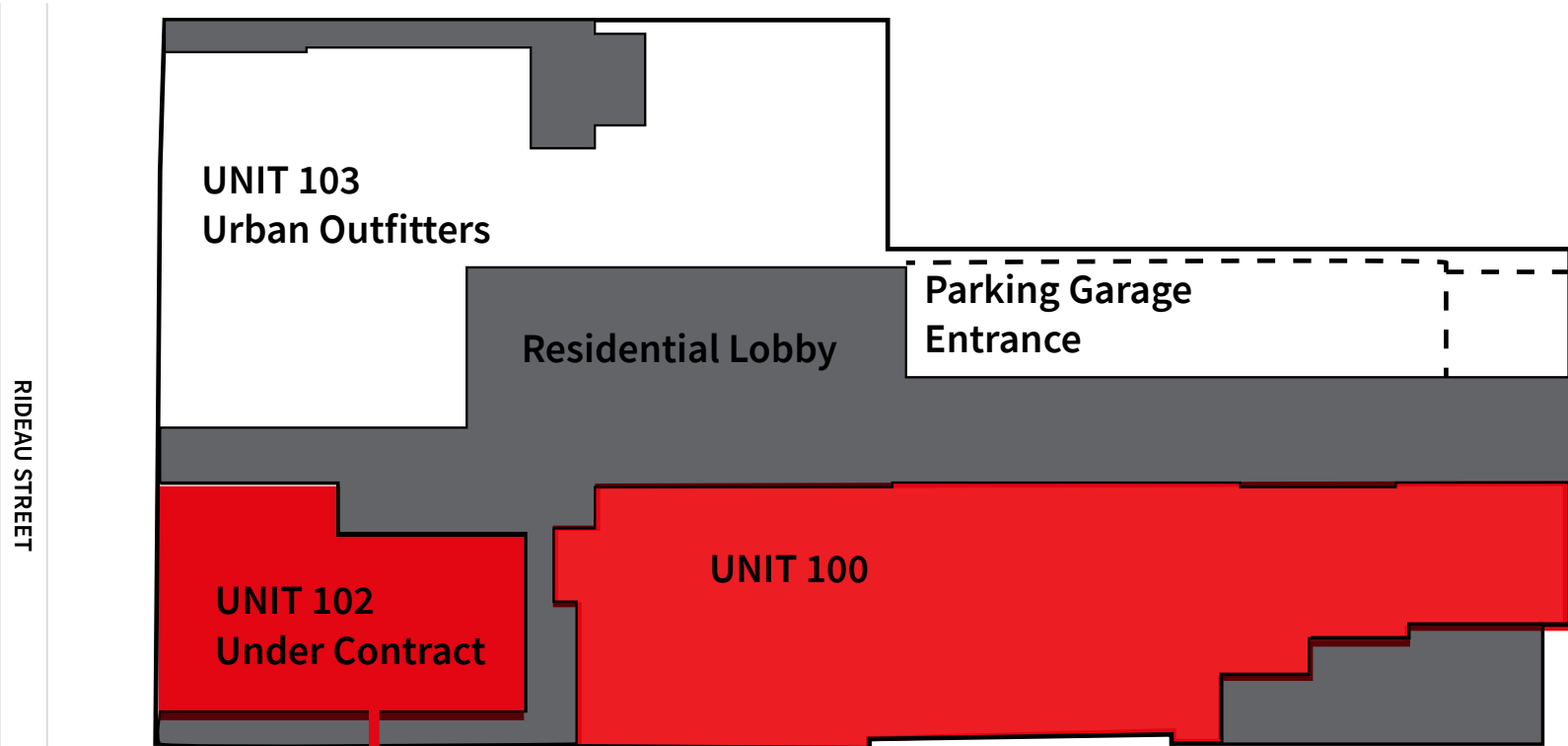
	1km	3km	5km
<div><div></div><div>Population</div></div>	20,318	125,790	233,362
<div><div></div><div>Daytime Population</div></div>	43,773	222,949	371,504
<div><div></div><div>Avg. Household Income</div></div>	\$83,834	\$91,735	\$95,283
<div><div></div><div>Median Age</div></div>	33.8	37.1	38.6

Source: Statistics Canada, 2021

Floor Plan

FIRST FLOOR

UNIT 100 | 6,299 SF



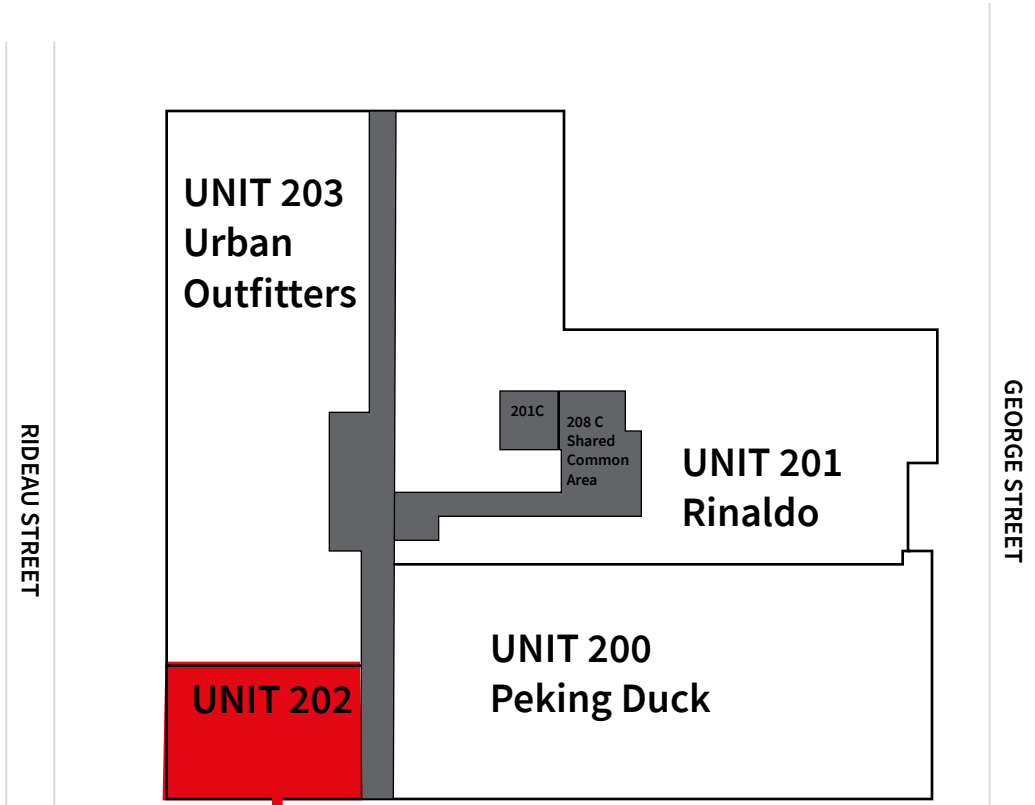
RIDEAU STREET

GEORGE STREET

Floor Plan

SECOND FLOOR

UNIT 102/202 | 3,619 SF



RIDEAU STREET

GEORGE STREET

FOR LEASE | 90 GEORGE STREET | OTTAWA, ON

Manon Larose*

Senior Vice President

+1 438 990 8968

Manon.Larose@am.jll.com

Paul Ferreira*

Senior Vice President

+1 416 391 6970

Paul.Ferreira@am.jll.com



Although information has been obtained from sources deemed reliable, neither Owner nor JLL makes any guarantees, warranties or representations, express or implied, as to the completeness or accuracy as to the information contained herein. Any projections, opinions, assumptions or estimates used are for example only. There may be differences between projected and actual results, and those differences may be material. The Property may be withdrawn without notice. Neither Owner nor JLL accepts any liability for any loss or damage suffered by any party resulting from reliance on this information. If the recipient of this information has signed a confidentiality agreement regarding this matter, this information is subject to the terms of that agreement. ©2021 Jones Lang LaSalle IP, Inc. All rights reserved. *Sales Representative.